

LEATHERA





www.Leathera.com

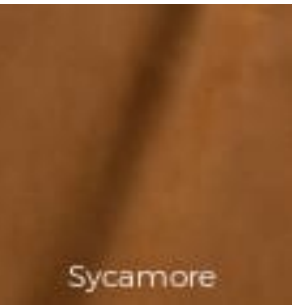
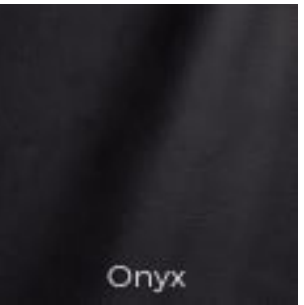
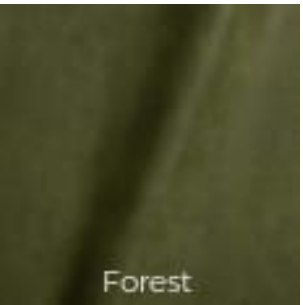
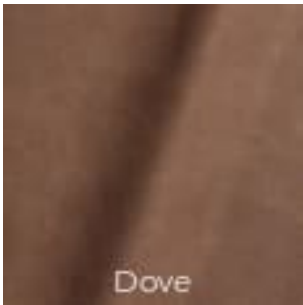
Luxury Leather

Feels rich, soft, unique

Luxury leather is crafted from finely treated Italian hides, thicker to highlight its natural uniqueness. After dyeing, the leather is carefully milled to accentuate the authentic grain and character, giving each piece a rich, soft feel. Over time, this leather gains a unique patina, making it more beautiful with every use and truly one of a kind. The leather material meets standards for durability, color fastness, adhesion, tensile strength, and flame resistance.

Size	50 sq ft +/-
Thickness	1.2-1.4 mm / 3-3.5 oz
Origin	South American, Finished in Italy 
Type	Aniline
Finish	Nubuck
Uses	Furniture, Hospitality, Garments, Handbags
Texture	 Velvety Smooth

Colors



Performance Characteristics

EN ISO 4045 DETERMINE Ph & Ph (DIFFERENCE FIGURE)	Min 3,2
ISO105/B02 COLOR FASTNESS OF LEATHER TO LIGHT: XENON LAMP	Grey Scale ≥ 3 on specimen Grey Scale = 3 on Reference Blue Wool #4
ISO 11641 COLOR FASTNESS OF LEATHER TO PERSPIRATION	20 Cycles ≥ 3
EN ISO 11640 COLOR FASTNESS OF LEATHER TO RUBBING	50 Cycles Dry ≥ 3 20 Cycles Wet ≥ 3
EN ISO 11644 FINISH ADHESION	2 N/cm
EN ISO 3376 MEASURE TENSILE STRENGTH AND % ELONGATION	Tensile Strength ≥ 8 Mpa % Elongation $\leq 80\%$
EN ISO 3377-1 TEAR STRENGTH (SINGLE EDGE TEAR)	>20 N Minimum

Flame Resistance

CA TB 117 - 2013	Complies
NFPA - 260 CIGARETTE IGNITION	Class 1
FMVSS 302	Complies